

# Canon

imageRUNNER®  
2270 / 2870

 Corporate  
Systems



**meap**  
POWERED BY

imageRUNNER®  
2270 / 2870

CORPORATE SYSTEMS

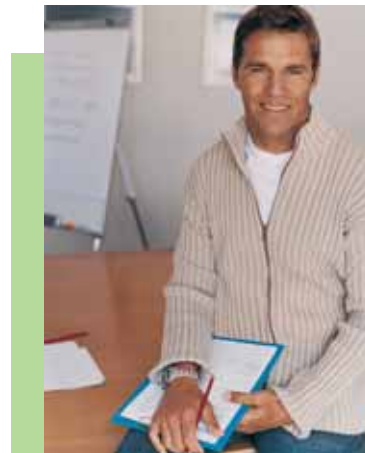
## EXPERIENCE A BREAKTHROUGH IN MULTIFUNCTION TECHNOLOGY

The Canon imageRUNNER® 2270 and imageRUNNER 2870 are new-generation devices that allow you to achieve maximum control over office workflow and costs.

Your growing business can no longer conform to the rigid workflow processes forced upon it by yesterday's office technology. You need an office solution that can be shaped around your specific needs. Now you can have it with the Canon imageRUNNER 2270/2870 devices.

Designed for the tightest possible integration with your environment, these new-generation imageRUNNER devices deliver unmatched performance, reliability, and innovation. Featuring Canon MEAP® (Multifunctional Embedded Application Platform) technology, every user will be empowered with more effective management of paper- and electronic-based information.

The imageRUNNER 2270/2870 systems provide greater security measures for your online information sharing and storage needs, plus a host of value-added functions that will make these devices the hub of your office communications.



## MAXIMUM PRODUCTIVITY FROM START TO FINISH.

Representing a new symbol of innovative technology, quality, and reliability.



Full-Color LCD Panel

The imageRUNNER 2270/2870 devices offer all the functionality you'll ever need in a multifunction machine. Powered by the latest Canon imagePlatform architecture, these models are designed to drive exceptional performance with true concurrent processing across all functions—including copying, printing, scanning, sending, and faxing.

At the heart of the system is a high-quality, digital laser copier/printer engine that delivers output speeds of up to 22 and 28 pages per minute (letter), respectively, to keep pace with daily business tasks. Supporting output resolutions

up to 2400 x 600-equivalent dpi, the imageRUNNER 2270/2870 devices ensure that every document always looks its best.

Ideal for small businesses and workgroups alike, the imageRUNNER 2270/2870 models offer a number of energy- and time-saving features to help reduce costs and meet those important deadlines. And, with innovative hardware and system accessories, you can configure a system to suit your specific needs. For all configurations, an easy-to-use, full-color touch-screen interface provides quick, intuitive operation of all device functions.



Duplexing Automatic Document Feeder – Handles multipage, double-sided originals effortlessly.



Expandable Paper Supply – Boosts the system's online paper capacity for uninterrupted productivity.



Internal Finisher – Provides neatly stapled and hole-punched (optional) output within the original device footprint.



Saddle Finisher – Creates professional-looking booklets in-house.

The images above may contain optional accessories.

## DUPLICATE DOCUMENTS, NOT EFFORT

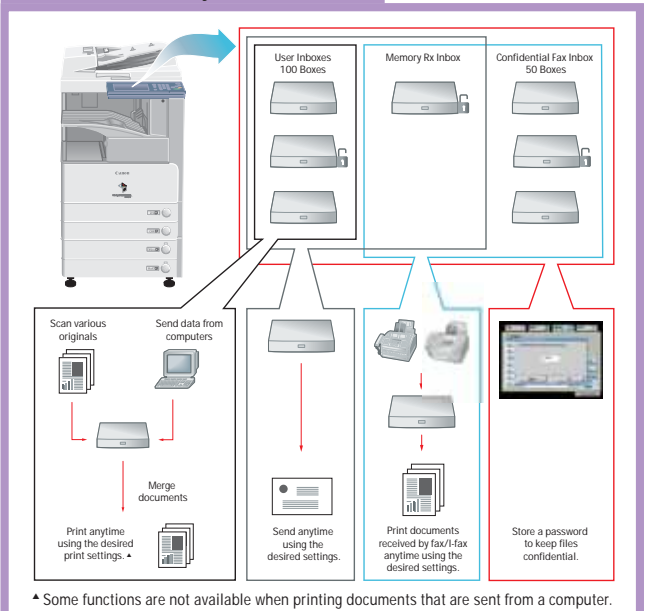
Versatile, productive copy and storage features put document control in the hands of every end-user.

### Advanced Hard-Copy Reproduction and Storage

The imageRUNNER 2270/2870 devices are equipped with powerful Canon image processing technology and an extensive memory capacity to maximize system performance. Each system has 512MB RAM, a 20GB Hard Disk Drive, and supports a number of advanced document reproduction and storage features that enhance workflow.

Now you can take advantage of device document manipulation features for accurate reproduction or modification of hard-copy images. Add digital data to copy sets to utilize complete document control and generate creative output. Plus, advanced document creation modes allow for covers, chapters, and inserts—even the ability to use several paper types in the same job.

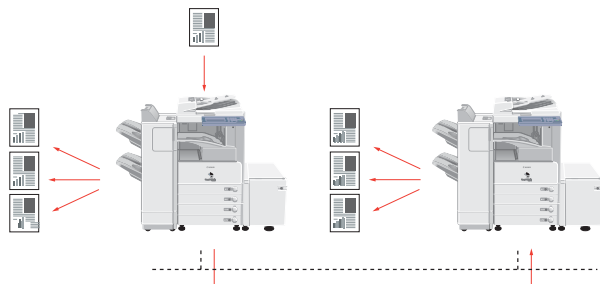
### Mail Box Functionality



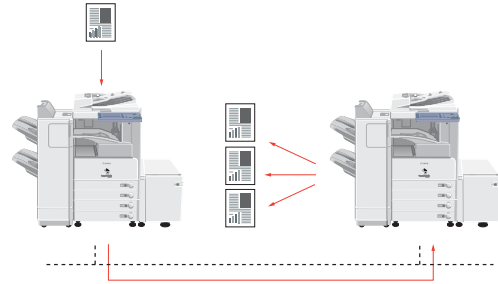
The imageRUNNER 2270/2870 models support value-added Mail Box functions that may serve as your centralized system for information-sharing, on-site document storage, and print-on-demand applications.

### Cascade and Remote Copy

#### Cascade Copy



#### Remote Copy



Double system productivity, and enable printing directly to the point-of-need, by leveraging the power of other imageRUNNER 2270/2870 devices installed on the network.

## EFFICIENT COMMUNICATIONS AT NETWORK SPEED

Incorporate innovative document distribution capabilities and transform the way your office communicates.



### Remove the Barriers To Efficient Information Sharing

Add the optional Universal Send™ kit and push digital documents to any network destination—individual or group e-mail addresses or Internet faxes, local Mail Boxes, network folders, and document management systems—in one simple, cost- and time-saving operation. Users may select from several industry-standard file formats, take advantage of searchable PDF (OCR) Mode,\*† PDF Encryption,\*† and URL Send Modes, and choose destinations from the system's high-capacity Address Book. With LDAP support, larger organizations can search up to five corporate e-mail servers for accurate, authorized recipient selection without error.

The imageRUNNER 2270/2870 devices support standard TWAIN-compliant scanning for basic image capturing needs through the Canon Network ScanGear utility, as well as traditional faxing through one or two optional dedicated fax lines—even PC faxing right from the desktop. Through job forwarding features, the system can route all of your incoming communications to other destinations, ensuring that you're never out of reach of important information.†

For even greater document distribution needs and populations, connect with eCopy ShareScan™ OP as an embedded application on your device. eCopy easily links the imageRUNNER 2270/2870 system with your company's e-mail and networked enterprise applications for secure, paperless distribution and management of data.

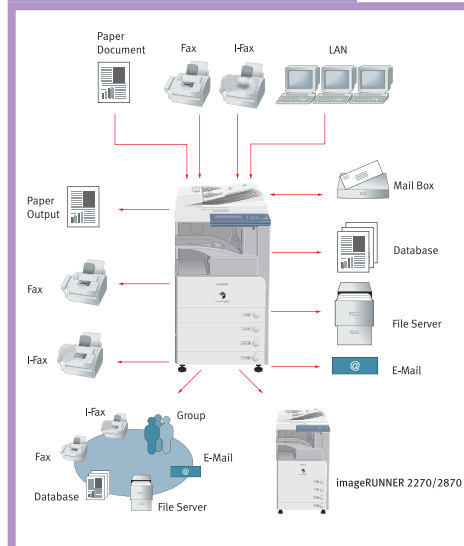
Universal Send Main Menu



eCopy ShareScan OP



Document Distribution Modes



\* Available with optional Universal Send PDF Enhancement Kit.

† Requires optional Universal Send Kit.

## FREE REIGN FOR ALL ON YOUR NETWORK

Unleash the true power of your imageRUNNER 2270/2870 devices for exceptional print performance.

### Easy Integration into Existing Infrastructures

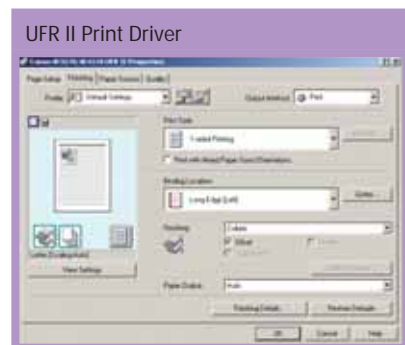
Compatible with most of today's popular operating systems, the imageRUNNER 2270/2870 systems are at home in any network environment. The standard 10/100Base-T Ethernet interface supports the fastest possible data transfer speeds in shared environments or, for expanded versatility, use the USB 2.0 High-Speed Interface for direct connection to a host PC.

### When You Need Something To Hold On To

When you choose to connect your imageRUNNER device as a network printer, rest assured that Canon has all the bases covered. Install the Canon Multi-PDL Printer Kit-E1 and watch employee productivity soar. With support for PostScript® 3™ Emulation and PCL 5e/6 page description languages, the imageRUNNER 2270/2870 devices are perfectly suited for general office printing applications with superior image quality. For accelerated printing performance, leverage Canon proprietary UFR II (Ultra Fast Rendering) technology, which processes print files with incredible speed.

### Value-added Printing Functionality

The imageRUNNER 2270/2870 devices go even further to support several additional value-added printing capabilities. There's a Secured Print function for document confidentiality, support for integration with imageWARE™ Publishing Manager (optional) for drag-and-drop document building, and optional barcode printing\*† for quick and accurate production of barcodes. The system also offers the industry's first-ever Web Access function.\* This option allows users to call up Internet or intranet data on the full-size user interface panel for information retrieval as well as print† forms and documents—without the use of a PC.



### Web Access



\*Check with your local Authorized Canon Dealer for availability.

† Requires Multi-PDL Printer Kit-E1.

## YOUR BUSINESS IS UNIQUE. WHY NOT YOUR OFFICE EQUIPMENT?

Install, manage, and customize the imageRUNNER 2270/2870 device operation and functionality to match your specific needs.

### Now You're In Complete Control

Don't let networked devices dictate how your business operates. Canon offers all the tools you need to simplify imageRUNNER 2270/2870 configurations, administration, access, and customization—regardless if you're supporting a single unit or a fleet of networked MFPs.

Canon device management utilities, offered either as part of the standard feature-set or as optional upgrades, are embodied within the Canon NetSpot® Suite and Remote UI™ utilities. Authentication features, such as Department ID Mode, provide the ability to track or limit access to the device to those users assigned valid IDs and passwords. Simple Device Login (SDL) and Single Sign-on (SSO) features allow users to enter existing personal IDs and passwords to gain system access.

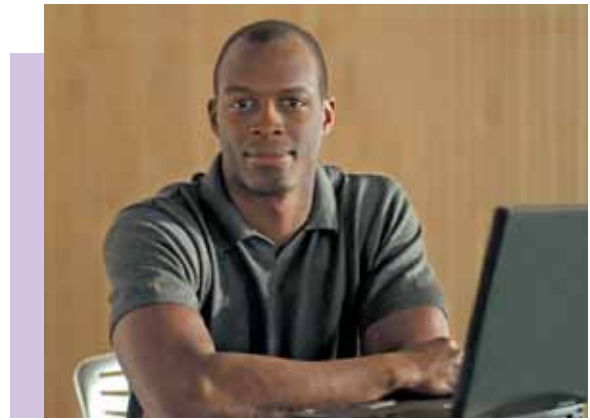
Once access is granted, a number of advanced security features go to work to help prevent data from being compromised or intercepted by outsiders. For even greater protection, the imageRUNNER Security Kit initiates the overwriting of hard disks and completely erases stored data.

In a networked environment, an administrator can control services and protocols as well as port usage. This person can also specify which users have access to the device using Mac and IP address filters.

### Access for Everyone, Anywhere, Anytime

The imageRUNNER 2270/2870 devices go further to provide access to every authorized user. Disabled users can operate system functions from a laptop or desktop PC using the Remote Operator's Software Kit, as well as receive audible job confirmation through the optional Voice Guidance Kit.\*

\*Check with your local Authorized Canon Dealer for availability.

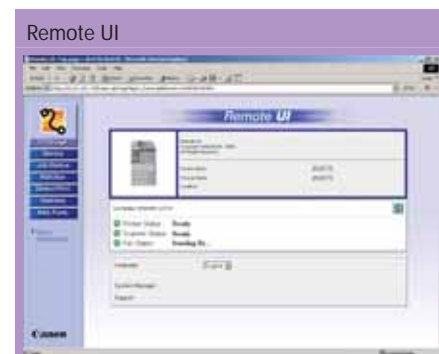
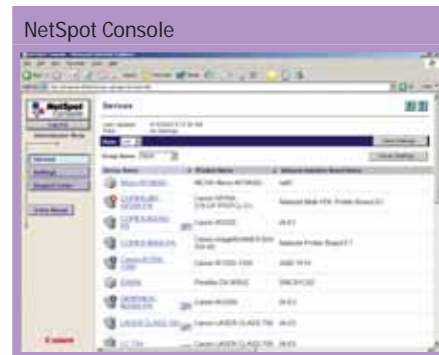


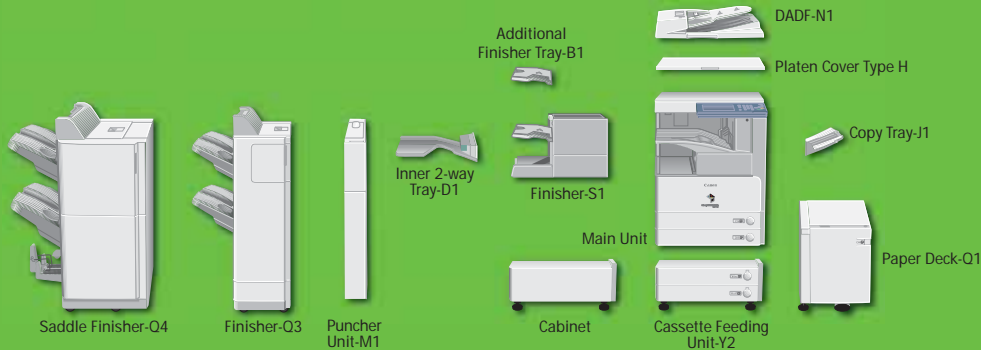
### Tailor Your System to the Way You Work

With Canon Java-based MEAP (Multifunctional Embedded Application Platform) architecture, the system can incorporate unique applications that run embedded in the device. The result is total integration of the imageRUNNER 2270 or imageRUNNER 2870 device into your business infrastructure.

### Image of a Leader

As a leading producer of network-connected multifunction devices, Canon continues to set new standards for quality, performance, and reliability. That's why you can trust Canon to provide you with solutions to make your corporate workgroup more productive, and any business more competitive.





imageRUNNER®  
2270/2870

## imageRUNNER 2270/2870 Specifications

Type:	Digital, Multifunction Imaging System
Imaging System:	Laser Dry Electrostatic Transfer
Developing System:	Dry Dual Component Developing System
Fixing System:	RAPID Fusing System™
Image Server Memory:	Standard 512MB RAM/20GB HDD
First-copy Time:	4.9 Seconds from Platen Glass 6.9 Seconds from Feeder
Warm-up Time:	10 Seconds or Less from Sleep Mode 30 Seconds from Main Power Off Up to 22/28 ppm (Letter)
Copy/Print Speed:	100
Max. Mail Boxes Supported:	5 Jobs
Max. Copy Reservation:	600 dpi x 600 dpi
Actual Resolution:	1200 dpi x 600 dpi (Copy)
Interpolated Resolution:	2400 dpi x 600 dpi (Print)
Halftone:	256 Gradations of Gray
Duplexing:	Standard Automatic Trayless Duplexing
Magnification Reduction/Enlargement:	25% to 400% — Platen 25% to 200% — Feeder (in 1% increments)
Exposure Control:	Automatic or Manual (9 Levels)
Paper Sources	
Standard:	Dual 550-sheet Paper Cassettes (1,100 Sheets) Stack Bypass (50 Sheets)
Optional:	2,500-sheet Paper Deck (20 lb. Bond) Dual 550-sheet Cassette Feeding Unit (4,750 Sheets Max.)
Multiple Copies:	1 to 999
Paper Weights:	17 lb. to 20 lb. Bond (Cassette) 17 lb. to 32 lb. Bond (Stack Bypass)
Network Interface	
Connections:	10/100Base-T (RJ-45)
Dimensions (H x W x D):	29-7/8" x 22-1/4" x 27-5/8" (761mm x 565mm x 700mm)
Installation Space: (W x D):	34" x 27-5/8"
Weight:	136 lb. (61.6kg)
Power Requirements:	120V AC, 60Hz, 8A
Power Consumption:	1.35kW (Max.)
Toner Yield:	21,000 @ 6% Coverage
Optional Accessories	
Universal Send Kit-B1	
Sending Methods:	E-mail, I-fax, Super G3 Fax (Optional), User Inbox, File Server (IPX, FTP, SMB)
Address Book Capacity:	Max. 1,800 Destinations Max. 5 LDAP Servers
File Format:	TIFF, PDF, Optional PDF (OCR)
Sending Sizes:	Statement to 11" x 17"

Duplexing Automatic Document Feeder-N1	
Acceptable Originals:	Statement to 11" x 17"
Capacity:	50 Sheets (20 lb. Bond/Letter)
Max. Paper Weight:	13 lb. to 32 lb. Bond
Cassette Feeding Unit-Y2	
Paper Capacity:	Dual 550-sheet Paper Cassettes (1,100 Sheets/20 lb. Bond)
Acceptable Paper Sizes:	Statement-R to 11" x 17"
Acceptable Paper Weights:	17 lb. to 20 lb. Bond
Paper Deck-Q1	
Paper Deck Capacity:	2,500 Sheets (20 lb. Bond)
Paper Size:	Letter
Acceptable Paper Weights:	17 lb. to 20 lb. Bond
Inner 2-Way Tray-D1	
Number of Trays:	Two
Tray Capacity	
Lower Output Tray:	250 Sheets (Letter) 100 Sheets (Other Sizes) 100 Sheets (Letter) 50 Sheets (Other Sizes)
Upper Output Tray:	150 Sheets (Letter)
Copy Tray-J1 (Optional):	Statement to 11" x 17"
Acceptable Paper Sizes:	Statement to 11" x 17"
Attachable Accessories:	Copy Tray - J1
Finisher-S1	
Number of Trays:	One (Second Tray Optional)
Tray Capacity	
Non-collate, Collate,	
Group Mode:	1,000 Sheets (Letter, Statement)
Staple Mode:	1,000 Sheets/30 Sets
Tray Capacity	
(with Additional Finisher Tray-B1)	
Non-collate, Collate,	
Group Mode:	300 Sheets per Tray (Letter, Statement) 300 Sheets/30 Sets per Tray (Letter)
Staple Mode:	150 Sheets/30 Sets (Legal, 11" x 17") Corner Stapling (11" x 17", Legal, Letter, Letter-R)
Staple Position/Size:	
Max. Stapling Capacity	
(Up to 20 lb. Bond):	50 Sheets (Letter)
Attachable Accessories:	Puncher Unit - R1 Additional Finisher Tray - B1 Copy Tray - J1
Finisher-Q3/Saddle Finisher-Q4	
Number of Trays:	Two
Tray Capacity	
Non-collate, Collate,	
Group Mode:	1,000 Sheets (Letter, Statement) 500 Sheets (11" x 17", Legal, Letter-R) 1,000 Sheets/30 Sets (Letter)
Staple Mode:	500 Sheets/30 Sets (11" x 17", Legal, Letter-R)

Max. Stapling Capacity	
Corner, Double:	50 Sheets (Letter), 30 Sheets (Letter-R, Legal, 11" x 17")
Saddle-stitching (Available on Saddle Finisher-Q4 Only)	
Acceptable Paper Sizes:	Letter-R, Legal, 11" x 17"
Capacity/Tray:	1 to 5 Sheets/25 Sets 6 to 10 Sheets/15 Sets 11 to 15 Sheets/10 Sets
Max. Stapling Capacity/Set:	15 Sheets
Folding:	V-fold
Attachable Accessories:	Puncher Unit-M1
Super G3 Fax Board-Q1/G3 Multi-Line Fax Board-D1	
Applicable Line:	Public Switched Telephone Network (PSTN)
Connection Lines	
Super G3 Fax Board-Q1:	One
Super G3 Multi-Line Fax Board-D1:	Two
Sending/Original Sizes:	Statement to 11" x 17" (from Document Feeder)
Recording/Printing Sizes:	Statement to 11" x 17"
Multi-PDL Printer Kit-E1	
Processor:	Canon Custom Processor—Shared
RAM:	512MB—Shared
Hard Disk:	20GB—Shared
PDL Support:	PCL 5e, PCL 6, PostScript 3 Emulation, UFR II
Interface Connections	
Standard:	RJ-45 (10/100Base-T), USB 2.0 High-speed
Network OS:	Windows® 98/Me/2000/XP Windows NT® 4.0/Server 2003 Macintosh® OS 8.0 or Later (PPD) Solaris™ 1.1x, 2.5x, or Later Novell® NetWare® v3.2, 4.1, 4.11, 4.2, 5, 5.1, 6, 6.5 (IPX/SPX™)
Additional Optional Accessories and Utilities	
Platen Cover Type H	Universal Send PDF Enhancement Kit-B1
Puncher Unit-R1/-M1	imageRUNNER Security Kit-A2
Cabinet	eCopy Suite/ShareScan OP
Envelope Feeder Attachment-C1	Web Access Software-A1
Accessibility Handle-A1	Copy Tray-J1
Braille Label Kit-A1	Remote Operator's Software Kit-A1
Document Tray-J1	Voice Guidance Kit-A2*
Card Reader-C1	Bar Code Printing Kit-A1*
Card Sets	Removable HDD Kit*

\*Check with your local Authorized Canon Dealer for availability.

© 2005 Canon U.S.A., Inc. All rights reserved.

As an ENERGY STAR® Partner, Canon U.S.A., Inc. has determined that these products meet the ENERGY STAR® guidelines for energy efficiency. ENERGY STAR and the ENERGY STAR certification mark are registered U.S. marks. eCopy ShareScan is a trademark of eCopy, Inc. PostScript is a registered trademark of Adobe Systems Incorporated in the United States and/or other countries. Windows and Windows NT are registered trademarks of Microsoft Corporation in the United States and/or other countries. Macintosh is a registered trademark of Apple Computer, Inc. Solaris is a trademark of Sun Microsystems, Inc. in the United States and other countries. Novell and NetWare are registered trademarks of Novell, Inc. in the United States and/or other countries. IPX/SPX is a trademark of Novell, Inc. Canon, IMAGERUNNER, MEAP, NetSpot, and Canon Know How are registered trademarks, and Universal Send, RAPID Fusing System, and the GENUINE logo are trademarks of Canon Inc. in the United States and may also be registered trademarks or trademarks in other countries. IMAGEWARE and Remote UI is a trademark of Canon U.S.A., Inc. IMAGEWARE is a registered trademark of Canon U.S.A., Inc. in the United States and is a trademark of Canon Inc. in certain other countries. IMAGEANYWARE is a service mark of Canon U.S.A., Inc. All referenced product names and other marks are trademarks of their respective owners.

All specifications are subject to change without notice.

Some products shown with optional accessories and equipment.

0047W358

0705R-IR2270/2870-75M-PNW

printed on recycled paper in the u.s.a.



Canon KNOW HOW®

1-800-OK-CANON  
www.usa.canon.com

Canon U.S.A., Inc.  
One Canon Plaza  
Lake Success, NY 11042